



CONQUER THE FIELD



20.2 MEGA
PIXELS
CMOS

BREATHTAKING
IMAGE QUALITY

Achieve stunning detail, depth and clarity in your shots with the 20.2-megapixel CMOS sensor on the EOS 7D Mark II delivering high-resolution and low noise results. Color reproduction is natural and rich while background blur in images and videos are beautifully smooth.

DIGIC
6
DUAL

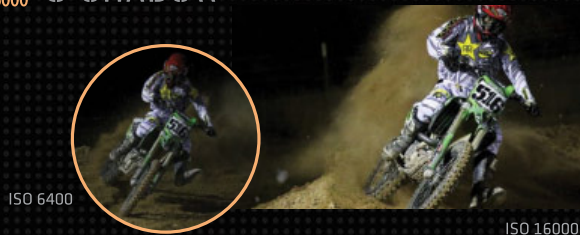
DOUBLY QUICK RESPONSE

Paired with the CMOS sensor, Dual DIGIC 6 image processors ensure instant start-ups on the EOS 7D Mark II while handling superior image quality, high-speed continuous shooting, and Full HD video recording with ease.



ISO
16000
16000

BEST OF LIGHT & SHADOW



Standard sensitivity range of ISO 100-16000, expandable to 25600 for videos and 51200 for images, lets you capture subjects in low-light conditions or indoors. Shadows and highlights are reflected accurately, and image quality is incredible even at fast shutter speeds or ISO.

SPECIFICATIONS

Sensor	• 20.2 MP APS-C CMOS Sensor
ISO Range	• 100-16000 standard • Expandable to 51200
Movie Recording	• 1080p/60/50/30/25/24 • MP4 or MOV • All-I, IPB, IPB (Light)
AF points	• 65 (All cross-type, center Dual cross-type)
AF in Live View	• Dual Pixel CMOS AF System
Focusing brightness range	• EV -3 – 18 (Conditions: f/2.8-sensitive center AF point, One-Shot AF, room temperature, ISO 100)
Maximum shutter speed	• 1/8000th sec
Flash Sync speed	• 1/250th sec
Metering Modes	• Approx. 150,000-pixel RGB+IR metering sensor and 252-zone TTL metering at max. aperture
Screen	• 3.0" 3:2 • 1.04 million dot
Viewfinder	• 100% coverage • 1.0x magnification
Continuous drive	• 10 fps
Max. Burst	• Approx. 1090 JPEG Large / Fine • 31 Raw
Lens aberration correction	• Peripheral illumination correction, Chromatic aberration correction, Distortion correction
Anti-flicker	• Possible
Electronic Level	• Provided
Interval Timer	• Shooting interval and shot count settable
Bulb Timer	• Bulb exposure time settable
Storage	• CF Card • SD/SDHC/SDXC Card
Weight (Body only)	• Approx. 910g (CIPA standards)
Dimensions	• Approx. 148.6 x 112.4 x 78.2 mm
GPS	• Built-in
Wi-Fi	• Optional

SOUTH & SOUTHEAST ASIA REGIONAL HEADQUARTERS:

CANON SINGAPORE PTE. LTD.
1 HarbourFront Avenue, #04-01 Keppel Bay Tower, Singapore 098632 [f](#) Canon Imaging Asia [You](#) [Tube](#) Canon Asia

www.canon-asia.com/eos7dmarkii

LOCALIZED MANUAL
Available

Localized manual available for Malaysia, Thailand, Vietnam and Indonesia only.

EOS
DIGITAL

Canon
Delighting You Always



TAKE CONTROL

CHAMPIONS KNOW NO FEAR

EOS 7D Mark II

20.2 MEGA
PIXELS
CMOS

DIGIC
6
DUAL

ISO
16000
16000

Dual Pixel
CMOS AF

Cross-type
Max. 1-point
65 AF

Up to
10.0
Frames
Per Sec

Made in
JAPAN

0190W987

02

MOMENTS ARE NOT BY CHANCE

RAPID CONTINUOUS SHOOTING 10FPS

Upto
10.0
Frames
Per Sec

When it comes to capturing action, the EOS 7D Mark II rules the race at a continuous shooting speed of 10 frames per second. Shoot fast-moving subjects in multiple shots and pick the best result.

A short shutter release time lag of 55msec and burst shooting performance at approximately 31 shots/RAW or approximately 1090 shots/JPEG Large increases your chances of capturing the decisive moment.



03

EYE ON THE TARGET

FAST PRECISION FRAMING

1st
FOR EOS

Cross-type
Max
65AF

The EOS 7D Mark II features a new AF system of 65 all cross-type AF points that focus at f/5.6 and a central AF point that performs dual cross-type focusing at f/2.8 for enhanced accuracy.

Autofocusing is still possible when it is almost too dark since minimum luminance is EV-3 with an f/2.8 lens. The high density of AF points in a wide AF area lets the EOS 7D Mark II achieve quick and precise AF with greater framing freedom.

- 🦋 SINGLE-POINT SPOT AF
- 🦋 SINGLE-POINT AF
- 🦋 AF POINT EXPANSION (UP, DOWN, LEFT & RIGHT)
- 🦋 AF POINT EXPANSION (SURROUNDING POINTS)
- 🦋 ZONE AF (9 PATTERNS)
- 🦋 LARGE ZONE AF (3 PATTERNS)
- 🦋 65-POINT AF AUTO SELECTION

AF AREA SELECT LEVER

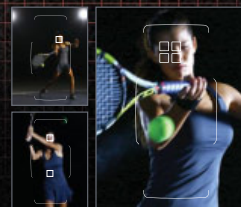
1st
FOR EOS

With the new AF area select lever on the EOS 7D Mark II, you can customize up to 11 options and have even more control over multiple AF-related functions with just a flick of the lever.



IMPROVED AE SENSOR

The EOS 7D Mark II has a new 150,000-pixel RGB + IR metering sensor. Coupled with the 252-zone metering, it offers far more accurate metering. Intelligent Tracking and Recognition (iTR) is also enhanced further with improved subject tracking when shooting in AI Servo AF mode.



iTR AF

ANTI FLICKER SHOOTING

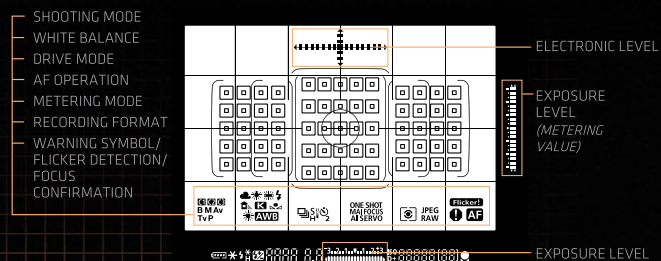
1st
FOR EOS

The EOS iSA (Intelligent Subject Analysis) system also makes color information and analysis available to the Anti Flicker Shooting function, so flickering artificial light sources are detected and compensated for even in continuous shooting.

NEW INTELLIGENT VIEWFINDER

1st
FOR EOS

Keep your vision in sight with the new intelligent viewfinder that allows you to change settings and shoot while looking through the viewfinder.



04

STRONGER THAN BEFORE

TOUGH INSIDE OUT

For lightweight and long-lasting durability, the EOS 7D Mark II is housed in a magnesium alloy body with improved weather sealing and dust resistance. On the inside, an enhanced mirror/shutter mechanism gives the EOS 7D Mark II a shutter durability of approximately 200,000 cycles.



BUILT-IN GPS & DUAL CARD SLOTS

A digital compass is now available in addition to recording of location information and a logger function. Dual memory card slots for an SD card and a CF card give you various recording options for optimal file handling.



05

MAKE THE WINNING MOVE

DUAL PIXEL CMOS AF

Dual Pixel
CMOS AF

When shooting in Live View mode and EOS Movie mode, Dual Pixel CMOS AF enables high-speed phase-difference detection AF on the sensor plane for fast and smooth subject tracking. Paired with an STM lens, Movie Servo AF delivers smoother tracking of moving subjects, and now AF speed can be customized for creative effect.

FULL HD MOVIE

The EOS 7D Mark II records Full HD videos at 60p frame rate for stunning and smooth footage. MP4 file format has also been added for greater compatibility with media players, and can be compressed for playback on smartphones or other mobile devices.

06

MATCH, SET & GAME ON

EF-S18-135mm f/3.5-5.6 IS STM

Features a stepping motor for smooth and quiet continuous AF while capturing video and in live view mode, and 4-stop optical image stabilization.



Battery Grip BG-E16

Improves shooting in vertical orientation and extended battery life with two LP-E6N or six AA batteries.

